

Key Vocabulary

Change - to make something or someone different.

Development - when something **changes** or improves.

Eastings - the vertical lines running from the top to the bottom, the number increasing eastwards.

Facilities - buildings or services that are made or used for a particular purpose.

Grid reference - a location on a map, which is found using the **northing** and **easting** numbered lines.

Hierarchy - a way of ranking and organising things or people.

Migration - movement of people from one place to another, this can be temporary or permanent.

Types of Settlements

Hamlet

A small **settlement** with only a group of houses.



Village

Villages are found in rural areas with a small shop a church and some houses.



Town

A town is a **settlement** where people live and work. Towns may have a variety of **facilities** such as shops, places of worship, leisure **facilities** and schools.



City

A busy **settlement**, usually with a cathedral or local government. Cities are given their name by a king or queen or because of the culture or history of the area.



Northings - the horizontal lines running from left to right, the number increasing northwards.

OS Map - Britain's mapping agency. Ordnance Survey maps show the landscape's human and physical features using symbols, a scale and a grid.

Population - the total number of people who live in an area.

Satellite image - images of the Earth taken from satellites orbiting the planet.

Settler - a person who moves to a new place with the intention to stay there.

Settlement - an area of land where people live and work.

Temporary settlements - an area of land where people live and work that are only occupied for a limited period of time.

OS Map and Grid References

OS Maps show physical and human features as symbols, to make them easier to read. They also have numbered grids to help us find locations on maps at different scales.



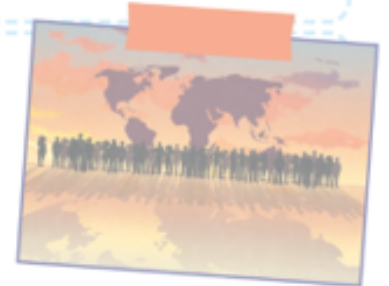
© Crown copyright and database rights (2024) OS (ac000087321)

Map users use **grid references** to help mark or locate a specific area on a map. To create a four-figure **grid reference** you use the grid lines (**eastings** and **northings**) and grid numbers.

Development of Settlements

Settlements develop and **change** over time for many reasons, such as:

- **Population** growth (due to **migration** or birth rates);
- The **settlement's** location - **settlements** close to the coast would develop due to the creation of harbours and ports.



I can describe different types of settlements and identify them on maps and aerial photographs.

I can describe how land is used in my local area and identify human and physical features.

I can explain how the local area has changed over time.

How and why is land use and settlement different when comparing the UK and New Delhi?

