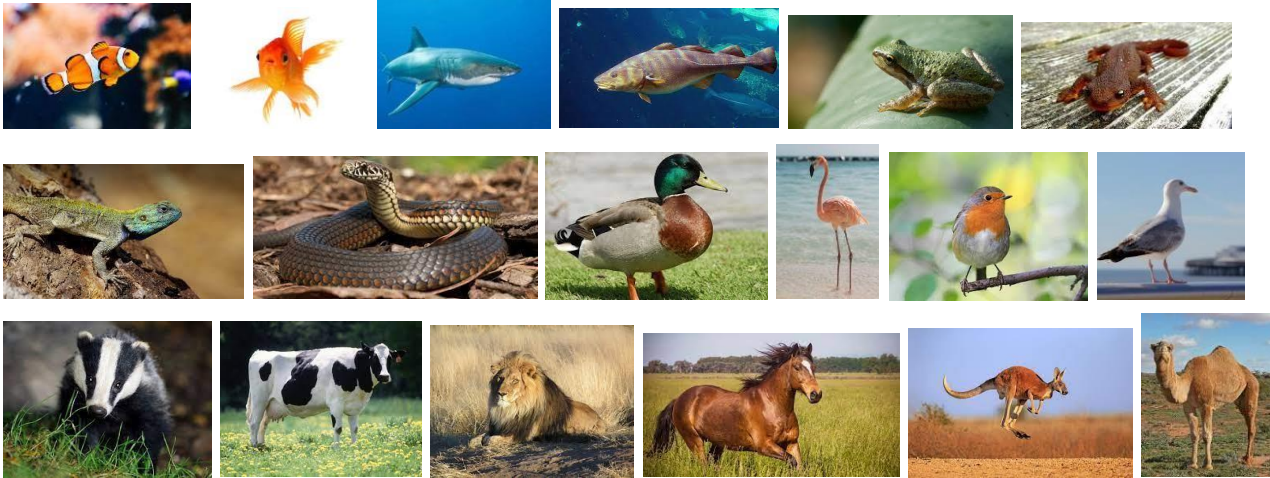


Frogwell School Year 1 Knowledge Organiser Term 5

Science – Animals (not including humans)

We will learn the names of many common animals including fish, amphibians, reptiles, birds and mammals:



Common animals can be classified by what they eat: they can be carnivores (eat meat, other animals), herbivores (eat plants) or omnivores (eat meat and plants).

Common animals can be described and compared by their physical features – feathers, fur, wings, tail, beak, scales, fins and legs. Can you describe the animals above?



Fish have scales, fins and breathe underwater using gills. They lay eggs underwater. They are cold blooded. Common fish include a shark, goldfish, clown fish and cod.



Birds have feathers, 2 wings, 2 legs and a beak. They are warm-blooded and lay eggs. Common birds include a chicken, blackbird, penguin and pigeon.



Mammals have hair or fur. They give birth to live young. A dog gives birth to puppies. A cat gives birth to kittens. They are warm-blooded. Common mammals include many pets (dog, cat), farm animals (pig, cow and sheep) and many wild animals (fox, badger, lion, giraffe and kangaroo).



Amphibians are cold-blooded and lay eggs. They live on land and in water. They have gills to breathe underwater. Common amphibians include a frog and toad.



Reptiles are cold-blooded and lay eggs. They have scales and cannot breathe under water. Common reptiles include a snake and lizard.

What do animals eat?
<ul style="list-style-type: none"> Animals that only eat meat (other animals) are called carnivores (examples include lions and eagles). Animals that only eat plants are called herbivores (examples include cows and giraffes) Animals that eat plants and meat are called omnivores (examples include humans and squirrels)



Key Vocabulary	
Backbone	A column of small linked bones down the middle of your back (or spine).
Carnivore	An animal that eats meat / other animals.
Cold-blooded	The body temperature changes depending on the surrounding temperature.
Gills	An organ on the sides of a fish to enable it to breathe under water.
Herbivore	An animal that only eats plants.
Omnivore	An animal that eats meat and plants.
Warm-blooded	A high body temperature that doesn't change much and isn't changed much by the surrounding temperature.
Wild	Animals or plants that live in natural surroundings and are not looked after by people.

