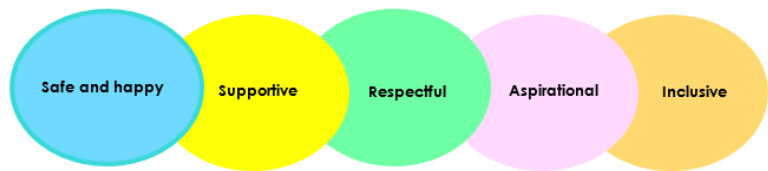




Learn for life – fly high



# Frogwell Primary School Newsletter

4th November 2022

## School news

### New play trail

The play trail is a big hit! It has been fantastic to see the new trail in use this week and the children tell us they love it! It is brilliant that we have this new facility to help children develop their balance and agility skills as well as their resilience. I am told some of our former pupils who are now in Year 7 are rather jealous that this wasn't built until *after* they left...sorry, Year 7! **We have unfortunately had a few problems with parents allowing their children to go on the play equipment after school and I must remind everyone that this is not allowed. Please make sure your child is with you and not climbing on any of the equipment.**

### Christmas events

We will be holding Christmas lunch on Thursday 15<sup>th</sup> December – you will be able to book online nearer the time. We will also be inviting parents to watch the Early Years and Key Stage 1 nativity play and a Key Stage 2 carols event, but we are still organising the dates so will let you know as soon as we can. Children's class parties will happen in the final week of term and, again, we will confirm dates and details nearer the time.

### Birthday sweets

I need to remind parents that we do not allow sweets or cakes to be brought into school for children's birthdays. Many parents do not want their children to have sweets and there are so many birthdays in every class that the number of sweets would be unmanageable. We do of course still celebrate the children's birthdays in class. As an alternative to sweets, if you would like to mark your child's birthday we invite parents to use the sweet money to instead buy a book for the class or school library in which we will put a special 'birthday celebration' nameplate to show that it was donated to celebrate the child's birthday and the date. This is a much longer lasting memento of the child's special day. This is, of course, entirely optional.

### Attendance

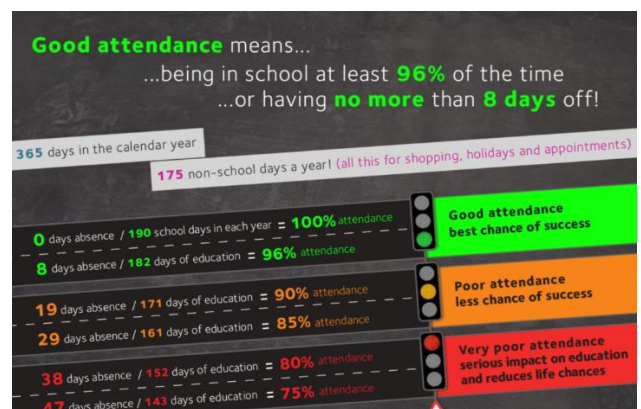
Good attendance and punctuality at school are very important. If you are having difficulties with attendance or lateness, please do make an appointment to speak to our Pastoral Support Assistant, Miss Wakeham or our Pastoral Support Manager, Mrs Galvin, to see if we can provide support or advice. The school is required to monitor children's attendance closely and refer to the Local Authority where there are 10 unauthorised absence sessions (each half day is one session). The Local Authority may then issue penalty notice fines.

Whole school attendance for the year so far has been **95.5%**.

This week's top three classes for attendance were:

- Mckee 98.3%
- Rowling 100%
- Dahl 100%

The highest attending class wins extra playtime!



### McKee Class autumn owls

One of our Resource Base groups, McKee Class, have been making beautiful owls from collected autumn leaves. Don't they look fabulous?



### Welcome back, Roko!

You may have noticed that our visiting school dog, Roko, has not been around for a little while. After a bit of a break, Roko came back to school this week, complete with his little high-vis jacket, and the children (and lots of parents!) were very pleased to see him.

Roko is risk assessed, carefully planned for and insured but **no other dogs may enter any part of the school site**, except registered assistance dogs. This includes the area around the car park and along the front of the school, not just in the playground. This includes dogs being carried as well as those walking. We also cannot have dogs tied up outside so any dog owners will need to make other arrangements for their pets during school drop off and pick up times.



### Little Wandle phonics

We're teaching every child to read with Little Wandle Letters and Sounds Revised

A complete SSP validated by the Department for Education



Learning to read fluently and confidently is critical to children's success and I am delighted to tell you that Frogwell is now a 'Little Wandle' school! All schools are required to adopt a Department for Education validated teaching scheme for phonics, and we have chosen Little Wandle. All our teachers and TAs are trained to teach high-quality phonics and early reading using this brilliant structured scheme.

## Year 6 residential trip

Many of our Year 6 children have been away on their school residential trip to Devon this week. The weather was not exactly kind to them but they had an amazing time nonetheless. We will be able to share more photos from the trip next week but for now I want to say a huge thank you to Mrs Cooper, Mrs Sheppard, Miss Metcalfe, Miss Reeves, Mrs Gosal and Mr Chandler for giving up their whole week with their own families to make the trip possible for our children. These trips can only happen through the goodwill of the accompanying adults, who are on duty 24 hours a day and who work incredibly hard. Here the children are looking ever so slightly damp on the Lynton and Lynmouth Cliff Railway after a three mile walk.



All parents and carers must park their cars considerately and legally. We are having visits from Wiltshire Police because some people are parking unsafely or inconsiderately, including on double yellow lines, on corners and blind spots and up on grass banks. This is dangerous for children and is also blocking the road for the buses. The end of the school day is very busy and this is unavoidable – please plan your journey with this in mind and remember that you may need to park further up the road and walk the last bit. Dangerous or inconsiderate parking will continue to be referred to Wiltshire Police, who will take action against the relevant car owners if needed.

Please be aware that the laws on no smoking anywhere on the school site includes **vaping**. It is against the law to smoke or vape anywhere in the school grounds, including the car park and school frontage areas.

Please can everyone remember that there is no parking allowed in the taxi spaces in the car park except for Wiltshire Council school transport taxis. Parking is limited and parents/carers will need to allow time to park up the road and walk along. Cars must **not** be parked, even with someone waiting inside, in the taxi area.

## Reminders

Parents and Carers are asked not to make any form of video or audio recordings or take photographs within the school grounds, other than those approved at official school events such as concerts.

Please remember bikes and scooters must not be ridden on the playground.

Children must not play on the climbing/balancing equipment before or after school – children should be closely supervised by the adult who is collecting them and kept with you while on school grounds.

Please do not allow children to be on the grassy bank behind the car parking bays for any reason.

Gates are locked at 08:55 in the morning so parents can leave the site but school officially starts at **08:50** so arrivals after that time will be marked as late.

Please do not smoke around the school entrance areas.

Please drive slowly and carefully in the car park and in the streets around the school, paying attention to pedestrians.

## Diary dates for 2022-23

<b>Week beginning 14<sup>th</sup> Nov 2022</b>	National Anti-Bullying Week
<b>Fri 18<sup>th</sup> Nov 2022</b>	Children In Need Day (details to follow)
<b>Thurs 1<sup>st</sup> Dec 2022</b>	Flu nasal vaccinations (only with consent from parents – NHS forms to follow)
<b>Fri 2<sup>nd</sup> Dec 2022</b>	Donaldson and Fox Classes multiskills event at Abbeyfield
<b>Fri 9<sup>th</sup> Dec 2022</b>	King-Smith and Lewis Classes Santa Run at Hardenhuish/Sheldon
<b>Thurs 15<sup>th</sup> Dec 2022</b>	Christmas lunch
<b>Fri 16<sup>th</sup> Dec 2022</b>	Last day of Term 2
<b>19<sup>th</sup> Dec 2022 – 2<sup>nd</sup> Jan 2023</b>	Christmas holidays
<b>Tues 3<sup>rd</sup> Jan 2023</b>	Start of Term 3
<b>Thurs 9<sup>th</sup> Feb 2023</b>	Last day of Term 3 for children
<b>Fri 10<sup>th</sup> Feb 2023</b>	TD day – no school for children
<b>13<sup>th</sup> – 17<sup>th</sup> Feb 2023</b>	Half term
<b>Mon 20<sup>th</sup> Feb 2023</b>	Start of Term 4
<b>Fri 31<sup>st</sup> March 2023</b>	Last day of Term 4
<b>3<sup>rd</sup> April – 14<sup>th</sup> April 2023</b>	Easter holidays
<b>Mon 17<sup>th</sup> April 2023</b>	TD day – no school for children
<b>Tues 18<sup>th</sup> April 2023</b>	Start of Term 5
<b>Fri 26<sup>th</sup> May 2023</b>	Last day of Term 5
<b>29<sup>th</sup> May – 2<sup>nd</sup> June 2023</b>	Half term
<b>Mon 5<sup>th</sup> June 2023</b>	Start of Term 6
<b>Fri 23<sup>rd</sup> June 2023</b>	TD day – no school for children
<b>Tues 25<sup>th</sup> July 2023</b>	Last day of Term 6

