



Frogwell Primary School & Complex Needs Resource Base

www.frogwell.co.uk  
01249 652815

Frogwell Primary School, Derriads Lane  
Chippenham, Wiltshire, SN14 0DG  
Headteacher - Rachel Neville

# Frogwell Primary School Newsletter

25<sup>th</sup> November 2022

## School news

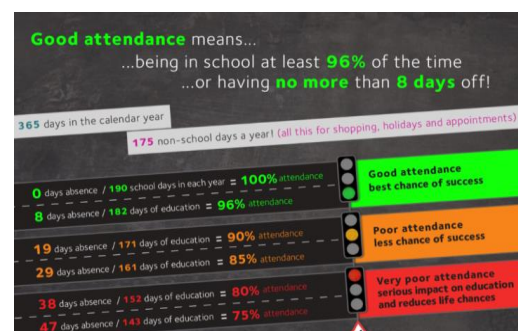
### Attendance

Whole school attendance for this week has been **91.1%**. We have had a large amount of illness again this week so the figure is very low again, although slightly better than last week. The school year so far is **94.9%**, which is below the national average so we need to keep working together to improve it.

This week's top three classes for attendance were:

- Potter 97.8%
- Lewis 96.8%
- King-Smith 93%

The highest attending class wins extra playtime!



### Absence reporting

Please remember that children's absence from school needs to be reported using either of our two new electronic methods, instead of phoning in:

- 1) Via the school website [www.frogwell.co.uk](http://www.frogwell.co.uk). Go to the 'Parents' tab and choose 'REPORT AN ABSENCE'. This will take you directly to a simple online form where you will fill in your child's name, class, the date and give the reason for the absence.
- 2) Via email to a new dedicated email address [attendance@frogwell.wilts.sch.uk](mailto:attendance@frogwell.wilts.sch.uk). This address can also be found on the same website page as the online form link above, in case you forget it!

Please be aware that telling a member of staff on the playground or the door about an absence is not the same as making a proper report to school using the email or online form; staff out side or on the door do not have time to get those messages to the office so **please make sure you report using the formal methods instead of just telling someone verbally at drop-off**. Contacting us via the email or online form will create a record of your absence report in school. You are then likely to be contacted for a follow-up phone call from a member of the Pastoral or Admin staff later in the day.

### Year 6 SATs week

The Department for Education has just announced that the dates for the end of Key Stage 2 tests ('SATs' in Year 6) will change very slightly due to the additional Bank Holiday for the Coronation of His Majesty King Charles III. SATs will now be a day later, from **Tuesday 9<sup>th</sup> May – Friday 12<sup>th</sup> May**.

## Peer Review day

Frogwell is part of the Schools Partnership Programme, which is a sector-led, cluster-based approach to school improvement. It provides the tools, coaching and support by which school leaders can identify, analyse and target an area of practice they are keen to develop or review, to bring it in line with their school improvement goals, with the added rigour of the honest and open peer review of trusted colleagues. We work with neighbouring schools in a professional partnership to research and explore the evidence that supports their review focus, derived from their own findings and experience, such as lesson observations, work scrutinies, interviews with staff and pupils, as well as external trusted evidence sources. This week we were visited by three practising teachers and school leaders from other Wiltshire schools for a whole-school review day focusing on pupil engagement. I am delighted to tell you that the team identified an enormous amount of excellent practice and positive features and that they found our children to be articulate, confident, polite and enthusiastic about their learning and their school. Some of the Frogwell staff are undertaking reviews for other local schools later in the year, so the process is collaborative and reciprocal between schools.

## Medicines in school

As a school, we are generally willing to administer medicines where needed to support a pupil being able to attend. However, we do need to remind parents and carers about a couple of small points.

- All medicines must be recorded clearly using the school's standard form, which must be handed in to the school office. No medicine of any kind can be given without the correct form being filled completed in full. If you need help filling in the form, please ask at the school office and we will support you.
- For medicines such as Calpol that are being provided for a short-term illness to help the child come to school (e.g. headache due to a cold), we can only give the medicine at the specific times the parent tells us. We cannot adopt an "as and when needed" approach; parents must record specific times for medicine on the form e.g. 10:00 and 14:00, along with the dosages.
- We can only give prescription medications in line with the labels on the packaging from the pharmacist, e.g. if an inhaler states 'two puffs', we can only give that amount and no more.

## Non-uniform day

Thank you to everyone who contributed items for the upcoming Christmas Shop on Friday's non-uniform day. It is not too late if you forgot to send your item in – just send it in this week as all contributions are needed and gratefully received! We will send out details of the Shop day in due course.

## Reminders

Parents and Carers are asked not to make any form of video or audio recordings or take photographs within the school grounds, other than those approved at official school events such as concerts.

Please remember bikes and scooters must not be ridden on the playground.

Children must not play on the climbing/balancing equipment before or after school – children should be closely supervised by the adult who is collecting them and kept with you while on school grounds.

Please do not allow children to be on the grassy bank behind the car parking bays for any reason. Gates are locked at 08:55 in the morning so parents can leave the site but school officially starts at **08:50** so arrivals after that time will be marked as late.

Please do not smoke or vape around the school entrance areas.

Please drive slowly and carefully in the car park and in the streets around the school, paying attention to pedestrians.



### Diary dates for 2022-23

<b>Thurs 1<sup>st</sup> Dec 2022</b>	Flu nasal vaccinations (only with consent from parents – NHS forms to follow)
<b>Fri 2<sup>nd</sup> Dec 2022</b>	<ul style="list-style-type: none"> <li>• Donaldson and Fox Classes multiskills event at Abbeyfield</li> <li>• Resource Base Santa Dash</li> </ul>
<b>Wed 7<sup>th</sup> Dec 2022</b>	Nativity 09.30
<b>Thurs 8<sup>th</sup> Dec 2022</b>	Nativity 14.00
<b>Fri 9<sup>th</sup> Dec 2022</b>	King-Smith and Lewis Classes Santa Run at Hardenhuish/Sheldon
<b>Thurs 15<sup>th</sup> Dec 2022</b>	<ul style="list-style-type: none"> <li>• Whole-school Christmas Celebration at Ladyfield Church</li> <li>• Christmas lunch</li> </ul>
<b>Fri 16<sup>th</sup> Dec 2022</b>	<ul style="list-style-type: none"> <li>• Christmas shop</li> <li>• Last day of Term 2</li> </ul>
<b>19<sup>th</sup> Dec 2022 – 2<sup>nd</sup> Jan 2023</b>	Christmas holidays
<b>Tues 3<sup>rd</sup> Jan 2023</b>	Start of Term 3
<b>Wednesday 11<sup>th</sup> Jan 2023</b>	Panto 'Beauty and the Beast' at school (afternoon)
<b>Thurs 9<sup>th</sup> Feb 2023</b>	Last day of Term 3 for children
<b>Fri 10<sup>th</sup> Feb 2023</b>	TD day – no school for children
<b>13<sup>th</sup> – 17<sup>th</sup> Feb 2023</b>	Half term
<b>Mon 20<sup>th</sup> Feb 2023</b>	Start of Term 4
<b>Fri 31<sup>st</sup> March 2023</b>	Last day of Term 4
<b>3<sup>rd</sup> April – 14<sup>th</sup> April 2023</b>	Easter holidays
<b>Mon 17<sup>th</sup> April 2023</b>	TD day – no school for children
<b>Tues 18<sup>th</sup> April 2023</b>	Start of Term 5
<b>Mon 8<sup>th</sup> May 2023</b>	Extra Bank Holiday for the Coronation of His Majesty King Charles III
<b>Tues 9<sup>th</sup> – Fri 12<sup>th</sup> May 2023</b>	Year 6 SATs week
<b>Fri 26<sup>th</sup> May 2023</b>	Last day of Term 5
<b>29<sup>th</sup> May – 2<sup>nd</sup> June 2023</b>	Half term
<b>Mon 5<sup>th</sup> June 2023</b>	Start of Term 6
<b>Fri 23<sup>rd</sup> June 2023</b>	TD day – no school for children
<b>Tues 25<sup>th</sup> July 2023</b>	Last day of Term 6