



## Frogwell Primary School Newsletter

9th December 2022

### School news

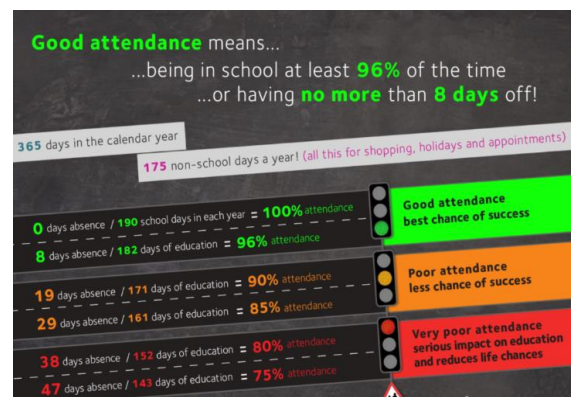
#### Attendance

Whole school attendance for this week has been **93.5**, again affected by significant amounts of illness but also by several children being late after 09.15, which is classed as an absence. The school year so far is **94.4%**, which is a little below the national average so we need to keep working together to improve it.

This week's top three classes for attendance were:

- **Donaldson Class** (96.8%)
- **Fox Class** (95.5%)
- **Dahl and King-Smith Classes** (both on 94.8%)

The highest attending class wins extra playtime!



#### Playground play equipment

Parents must not allow their children to play on any of the climbing equipment before or after school. This equipment is out of bounds except when under direct staff supervision in planned sessions. All children should be closely supervised by the adult who is collecting them and kept with you while on school grounds.

#### King-Smith and Lewis Classes Christmas Fun Run

King-Smith and Lewis had a great time at the Chippenham Sports Partnership Christmas Fun Run today. Fully layered up against the cold, they went to Hardenhuish School and joined in the warm-up, then completed the fun run course around the field, ending up at Sheldon School for some warming refreshments. Despite the super-chilly conditions, everyone had lots of festive fun!



## Increased incidences of scarlet fever

There are lots of viruses that cause sore throats, colds and coughs circulating at the moment, and you will have heard about the increase nationally in cases of scarlet fever caused by Group A Streptococcus. We have already sent out a specific letter with information about this via email, so please do make sure you read it. All of the infection control and prevention processes that we already have in place (e.g. good hand hygiene, ventilation and cleaning) will help reduce the spread of any infection cases in school (there have been none to date).

Scarlet fever is a common childhood infection caused by Streptococcus pyogenes, or group A Streptococcus (GAS). It is not usually serious, but should be treated with antibiotics to reduce the risk of complications (such as pneumonia) and spread to others. The early symptoms of scarlet fever include sore throat, headache, fever, nausea and vomiting. After 12 to 48 hours, the characteristic red, pinhead rash develops, typically first appearing on the chest and stomach, then rapidly spreading to other parts of the body, and giving the skin a sandpaper-like texture. The scarlet rash may be harder to spot on darker skin, although the 'sandpaper' feel should be present. Patients typically have flushed cheeks and be pale around the mouth. This may be accompanied by a bright red 'strawberry' tongue.

### Invasive Group A Strep (iGAS)

The same bacteria which cause scarlet fever can also cause a range of other types of infection such as skin infections (impetigo) and sore throat (also known as Strep throat). In very rare cases, the bacteria can get into the bloodstream and cause an illness called invasive Group A strep (iGAS). Whilst still uncommon, there has been an increase in iGAS cases this year, particularly in children under 10 years old. It is very rare for children with scarlet fever to develop iGAS infection. Parents are advised to trust their judgement when their child is unwell; if their child seriously deteriorates, they should speak to their GP or call 111 for advice.

You can reduce the spread of all infections by practicing good hand and respiratory hygiene and other standard infection control measures.

## Nativity performances



Thank you to all the parents, carers, friends and relatives who came to watch the two performances of 'The Christmas Recipe' this week. We hope you enjoyed it! The children and staff worked so hard to prepare the show and it was wonderful to have everyone back in the hall for our first nativity since the pre-pandemic Christmas of 2019. The children did us all proud with their fantastic singing, Makaton signing, dancing and speaking. I would like to remind you that any photos you took at the event that include children other than your own must not be shared on social media without the specific consent of their parent/carer. It was also great to be joined by some of our school governors, especially our new Chair of Governors, Nigel Linacre.

## Christmas Celebration at Ladyfield Church, Thursday 15<sup>th</sup> December

We are looking forward to our whole-school celebration at Ladyfield Church next week. In order to manage the seating and space, there is a strict limit of two adults per family only. Please respect this limit out of fairness to all. Please complete the online form with the names of the adults (two maximum!) attending from your family. The concert starts at 10.00 so we will be opening the doors a little before that. The front rows of seats will be used by the younger classes. The children must wear their normal school uniforms but may add a small festive flourish such as a Christmas badge or tinsel in their hair if you would like to – no hats please!

## School uniform

We are noticing some children are coming to school wearing non-uniform items. Please ensure your child is dressed appropriately in uniform, in line with our policy and home-school agreement, including a **royal blue** jumper (not navy!). This includes the need for PE kit that is in line with the policy, not colourful or sports logo items. **If you need financial assistance with uniform items, please do talk to us as we have access to a fund to support families with this.** The uniform policy is at the end of this letter for your reference – please stick to it as children wearing non-uniform items often feel like they 'stick out' which can make them uncomfortable and anxious.

### Lacock Abbey Christmas Tree Festival

Frogwell are delighted to have a tree in this year's Lacock Abbey Christmas Tree Festival. Morpurgo Class made decorations for the Frogwell tree as part of their unit on plastic pollution and sustainability, 'upcycling' materials that would otherwise have been thrown away. A small group of children represented their class at Lacock Abbey last week to decorate the tree. Thank you to Mrs Galvin, Mrs Nicholls, Miss Wakeham, Mrs Dowd and Mr Chamberlain as well as the children for organising the event and helping with the making. You can visit the Christmas Tree Festival until 31<sup>st</sup> December, so look out for the Frogwell tree if you go! <https://www.nationaltrust.org.uk/visit/wiltshire/lacock/christmas-lacock>



### Diary dates for 2022-23

<b>Thurs 15<sup>th</sup> Dec 2022</b>	<ul style="list-style-type: none"> <li>• Whole-school Christmas Celebration at Ladyfield Church 10.00 <b>2 adults per family maximum due to space in the church – please register your adult names on the online form sent out earlier this week</b></li> <li>• Christmas lunch</li> </ul>
<b>Fri 16<sup>th</sup> Dec 2022</b>	<ul style="list-style-type: none"> <li>• Christmas shop</li> <li>• Last day of Term 2</li> </ul>
<b>19<sup>th</sup> Dec 2022 – 2<sup>nd</sup> Jan 2023</b>	Christmas holidays
<b>Tues 3<sup>rd</sup> Jan 2023</b>	Start of Term 3
<b>Wednesday 11<sup>th</sup> Jan 2023</b>	Panto 'Beauty and the Beast' at school (afternoon)
<b>Thurs 9<sup>th</sup> Feb 2023</b>	Last day of Term 3 for children
<b>Fri 10<sup>th</sup> Feb 2023</b>	TD day – no school for children
<b>13<sup>th</sup> – 17<sup>th</sup> Feb 2023</b>	Half term
<b>Mon 20<sup>th</sup> Feb 2023</b>	Start of Term 4
<b>Fri 31<sup>st</sup> March 2023</b>	Last day of Term 4
<b>3<sup>rd</sup> April – 14<sup>th</sup> April 2023</b>	Easter holidays
<b>Mon 17<sup>th</sup> April 2023</b>	TD day – no school for children
<b>Tues 18<sup>th</sup> April 2023</b>	Start of Term 5
<b>Mon 8<sup>th</sup> May 2023</b>	Extra Bank Holiday for the Coronation of His Majesty King Charles III
<b>Tues 9<sup>th</sup> – Fri 12<sup>th</sup> May 2023</b>	Year 6 SATs week
<b>Fri 26<sup>th</sup> May 2023</b>	Last day of Term 5
<b>29<sup>th</sup> May – 2<sup>nd</sup> June 2023</b>	Half term
<b>Mon 5<sup>th</sup> June 2023</b>	Start of Term 6
<b>Fri 23<sup>rd</sup> June 2023</b>	TD day – no school for children
<b>Tues 25<sup>th</sup> July 2023</b>	Last day of Term 6

# School uniform policy

## (including rules on jewellery etc)

At Frogwell Primary School we believe that school uniform is important for the following reasons:

- it helps promote a sense of pride in the school and a feeling of belonging
- it is practical and distinctive
- it helps us quickly and easily identify Frogwell children when out on trips etc
- it is not distracting in class
- it helps make children feel equal to one another in terms of appearance

All children are expected to wear the school uniform. School logo jumpers and other items can be purchased from our online store at <https://www.gooddies.co.uk/product-category/schools/frogwell-primary-school/>

Plain (non-logo) items of uniform are readily available in supermarkets and these are equally acceptable.

It is essential that all items of clothing are clearly named as matching lost items of un-named identical clothing to the owner is very difficult and a waste of valuable teaching time for staff.

### Clothing

- **Royal blue** school sweatshirt or cardigan (plain or with school logo)
- Grey skirt, trousers or smart school shorts
- **Pale blue** polo shirt / cotton shirt (optional school logo polos are available to order via our online shop)
- Blue checked summer dress
- Black, grey or white socks or tights

### Shoes:

- Sensible flat black school shoes or smart plain black trainers (not boots please). All shoes should be plain black, without any white stripes etc.
- Sturdy sandals are permitted in the summer but these must be securely attached to the feet and suitable for active play (no flip-flops, sliders or similar).

### PE Kit:

- Plain black / navy shorts, plain white t-shirt (optional school logo PE tops are available to order via our online shop)
- Daps for indoor PE
- Trainers for outdoor PE
- Plain black / navy joggers and a plain black / navy sweatshirt or 'hoodie' may be worn for cold weather outdoor PE in the winter.
- Please remember to pack socks for those who wear tights with their normal school clothes.

### Swimming kit:

- Sensible one-piece swimming costume for girls (no bikinis or tankinis please)
- Sensible trunks / fitted shorts for boys (no baggy shorts please)
- Swimming hats are strongly encouraged by school and the swimming pool
- Towel

### Hair, make-up, jewellery etc

- Children should not come to school with 'fashion' hairstyles including dyed hair colours, mohicans or tram lines / shaved patterns.

- Long hair should be tied back.
- Hair accessories should be kept simple and small (e.g. no 'JoJo bows' or fancy hairbands).
- Make-up and nail varnish are not to be worn to school. False / acrylic nails are not allowed
- The only jewellery permitted is a watch and one pair of small stud earrings (earrings must be removed or covered for PE for safety reasons). Hoop earrings are not suitable for school due to the risk of them being caught and pulled during active play or in busy environments.
- Temporary tattoos are not to be worn to school.
- Parents are responsible for making sure that any weekend or school holiday make-up etc is completely removed before children come back to school. This includes where children have worn make-up etc as part of theatrical or dance performances out of school.

We hope children are proud of their school uniform and that it makes getting ready for school easier for parents. We appreciate parents supporting us, and their child, by ensuring they are dressed appropriately for school. This is a good habit for children to get into for their future at secondary school and in employment.